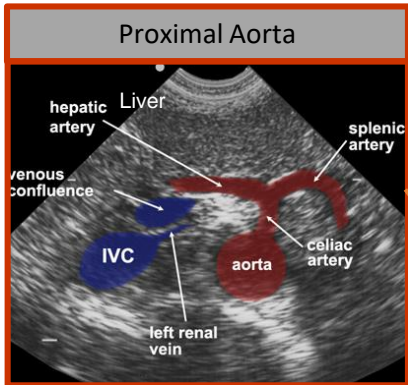
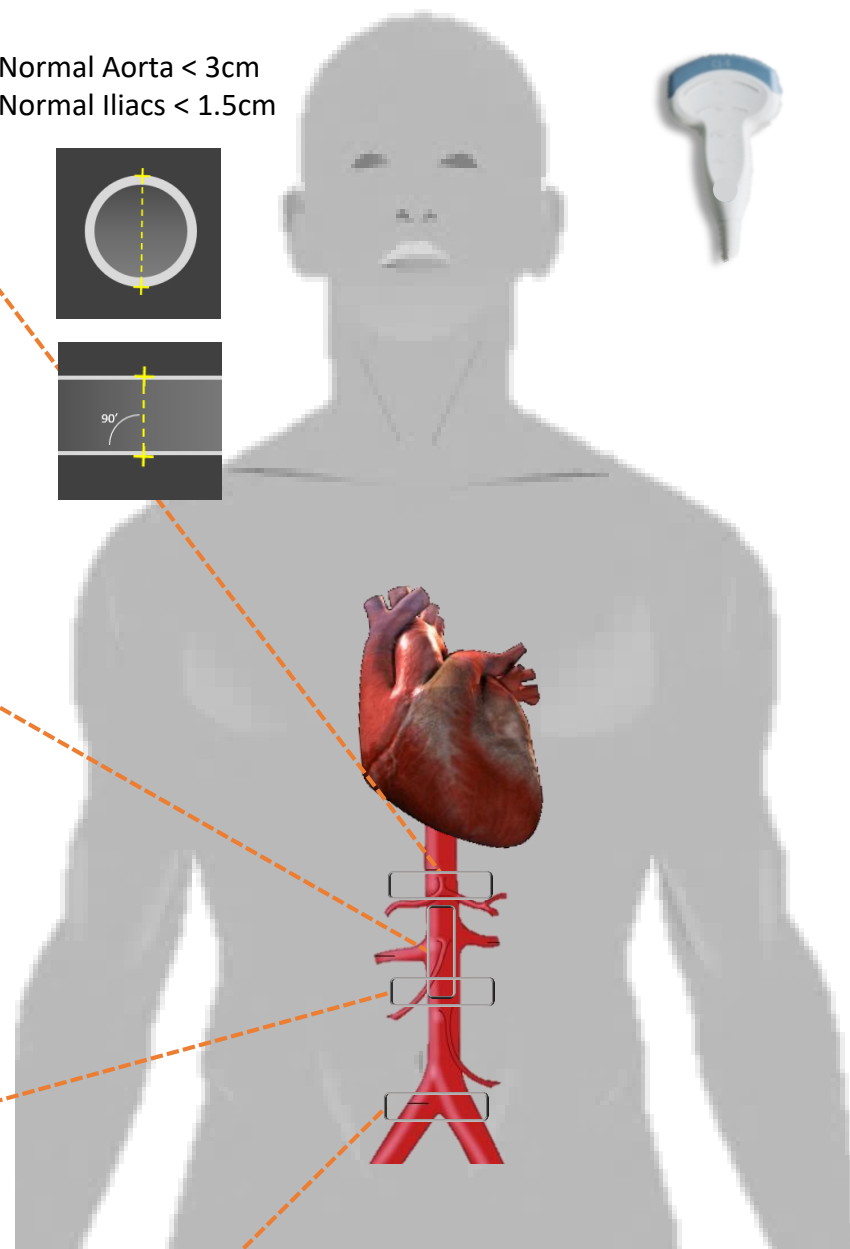
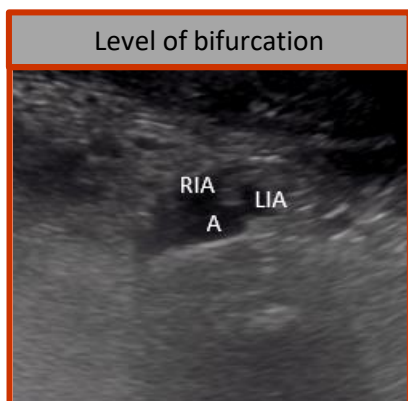
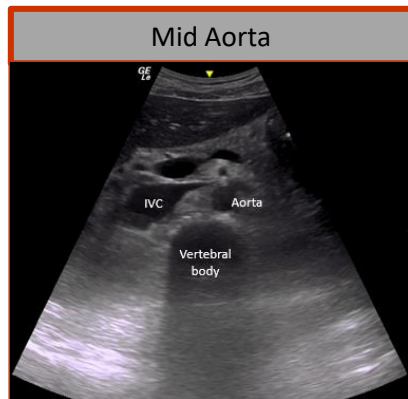
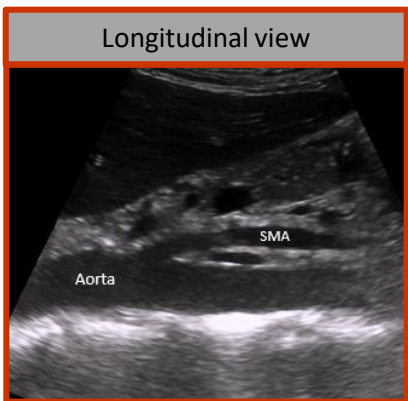
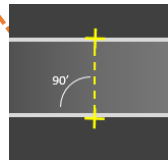
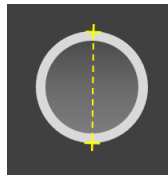


Abdominal Aorta



Normal Aorta < 3cm
Normal Iliacs < 1.5cm



IVC	Aorta
On patient's right	On patient's left
Compressible	Non-compressible
Thinner walls	Thick walls
Not pulsatile (or displays 'double-pulsatile swing' = transmitting the cardiac atrial and ventricular pressure wave)	Pulsatile (simple)
Usually larger (can depend on hydration status)	Usually smaller (unless AAA)