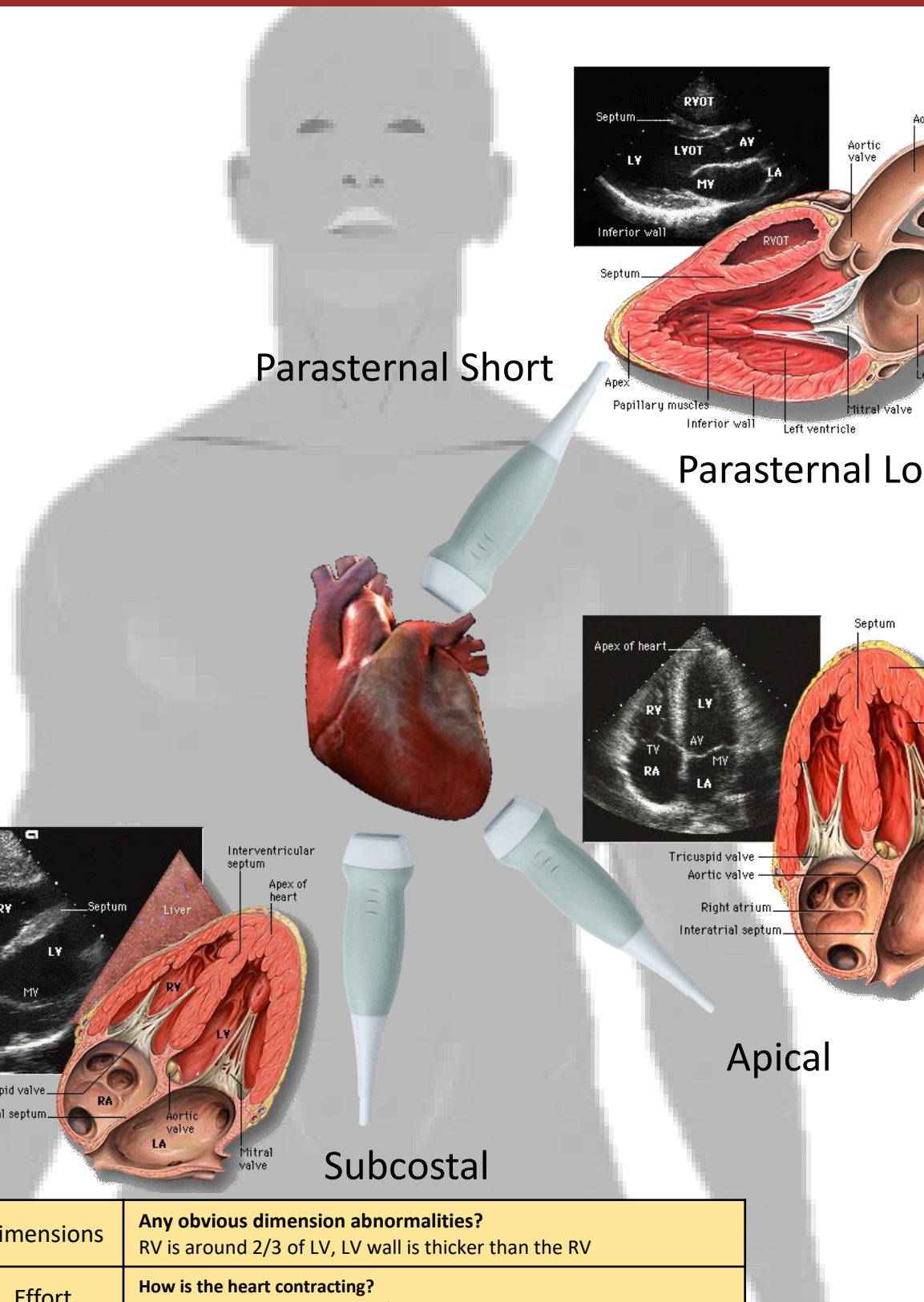
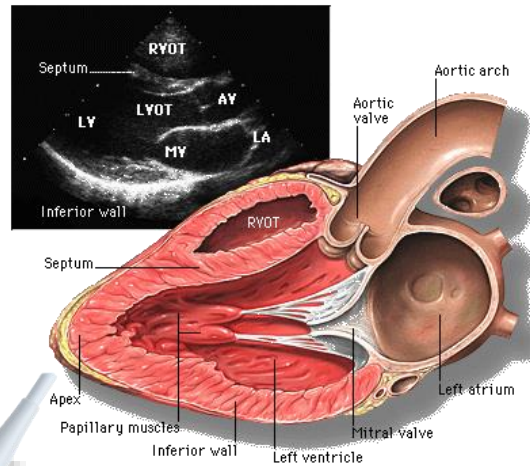


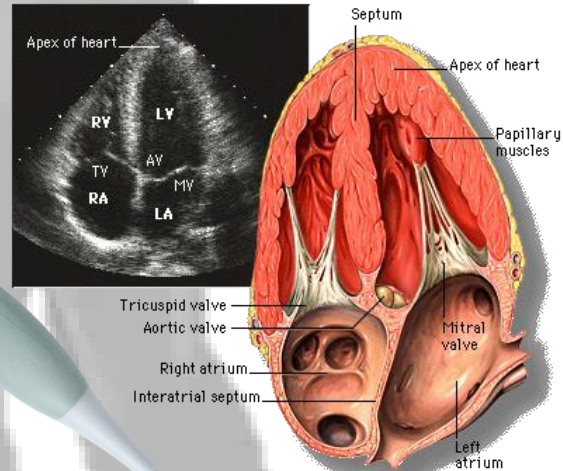
# Heart Ultrasound



Parasternal Short

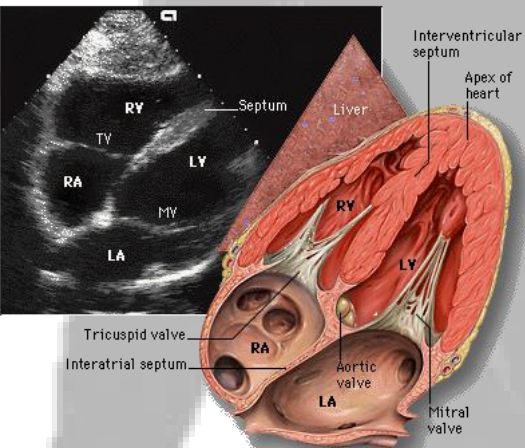


Parasternal Long



Apical

Subcostal



<b>D</b>	Dimensions	<b>Any obvious dimension abnormalities?</b> RV is around 2/3 of LV, LV wall is thicker than the RV
<b>E</b>	Effort	<b>How is the heart contracting?</b> LV should contract by at least 1/3. All the walls should contract equally
<b>F</b>	Fluid	<b>Is there fluid around the heart?</b> Small < 1cm, moderate 1-2cm, large > 2cm
<b>G</b>	Gradients	<b>Pressure gradients cause blood flow across valves:</b> Do the valves look normal? Are they opening and closing normally?